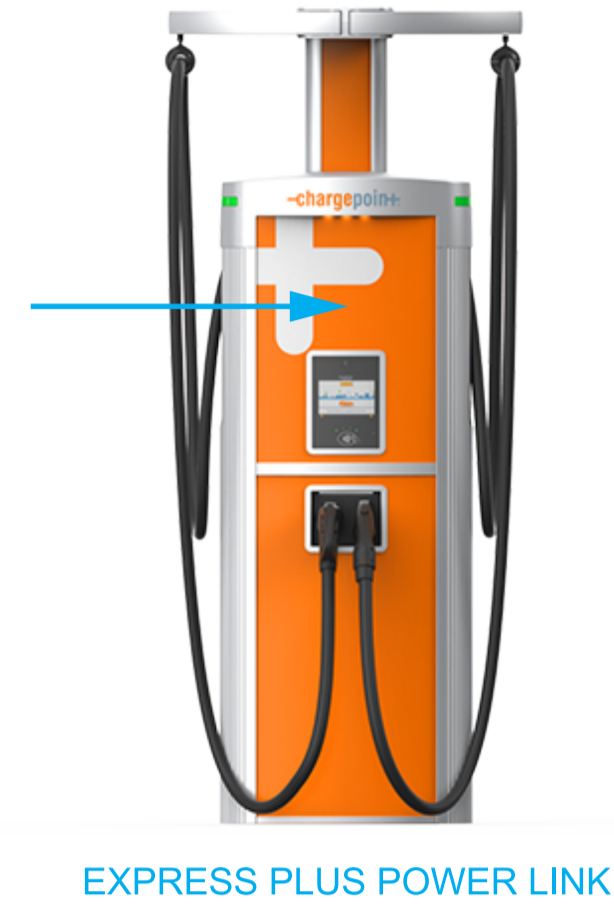


**EXPRESS PLUS POWER LINK 1000 WITH DISPLAY**  
**EXPRESS PLUS POWER LINK 2000 WITH DISPLAY**  
**CUSTOM SIGN TEMPLATE**  
**-FRONT TOP**



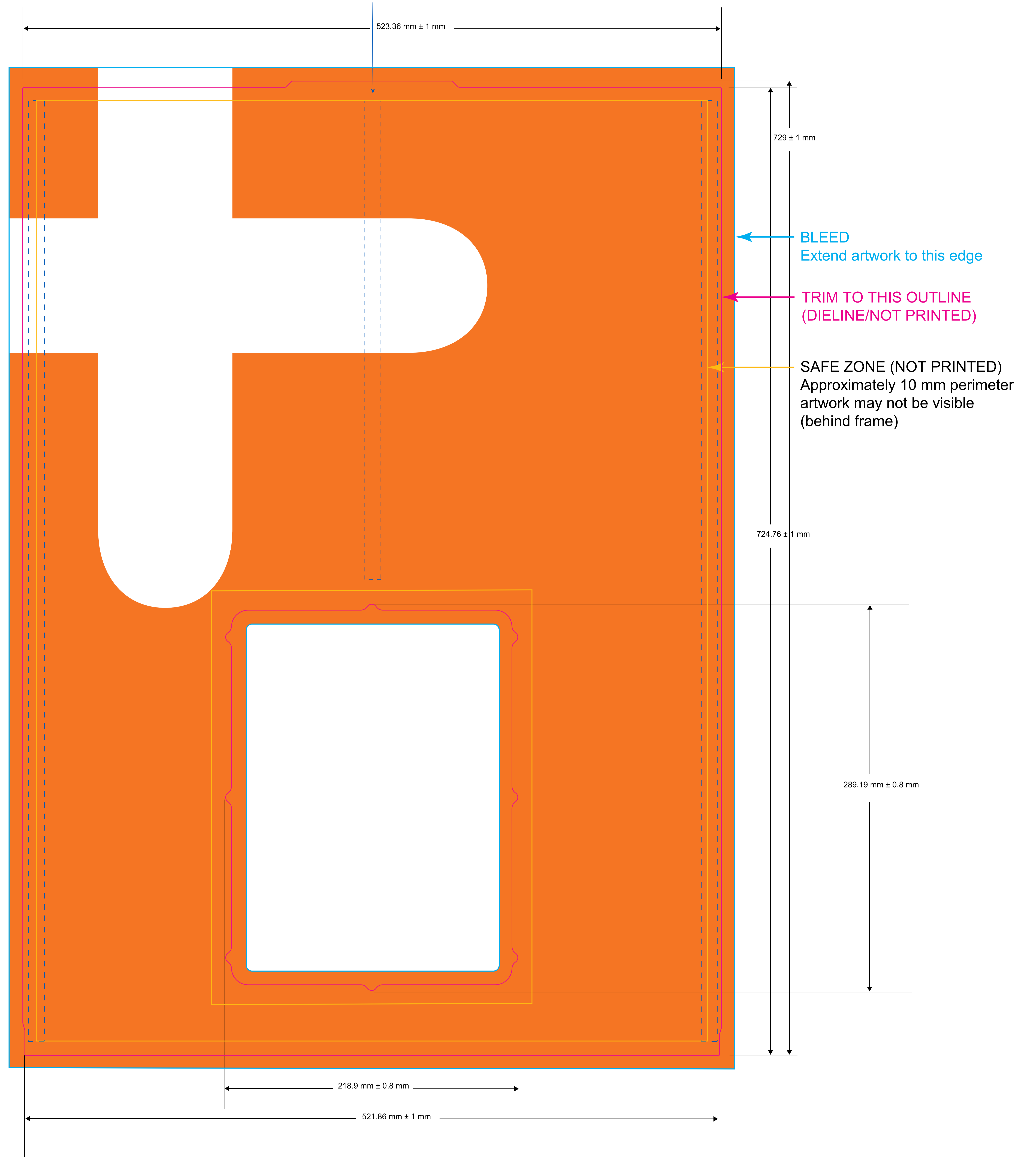
EXPRESS PLUS POWER LINK

**NOTES & REQUIREMENTS**

- Artwork must be in **vector** format. Do not use raster images.
- Artwork must be in **CMYK** process color. (Call out any PMS numbers for reference, but artwork is screen printed using CMKY only.)
- For full bleed artwork, provide minimum 5-mm bleed.
- Convert all fonts to outlines.
- \* ChargePoint artwork is included as reference ("ChargePoint Reference Artwork" layer).

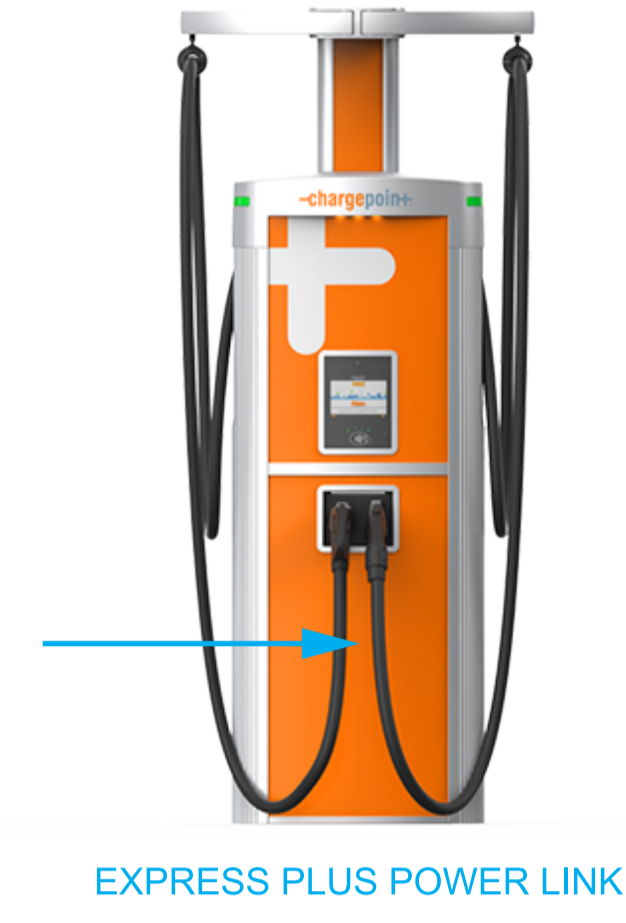
ChargePoint standard artwork is included for reference only.

Place custom artwork on CUSTOMER ARTWORK layer:



SCALE 1.000

**EXPRESS PLUS POWER LINK 1000 WITH DISPLAY**  
**EXPRESS PLUS POWER LINK 2000 WITH DISPLAY**  
**CUSTOM SIGN TEMPLATE**  
**-FRONT BOTTOM**



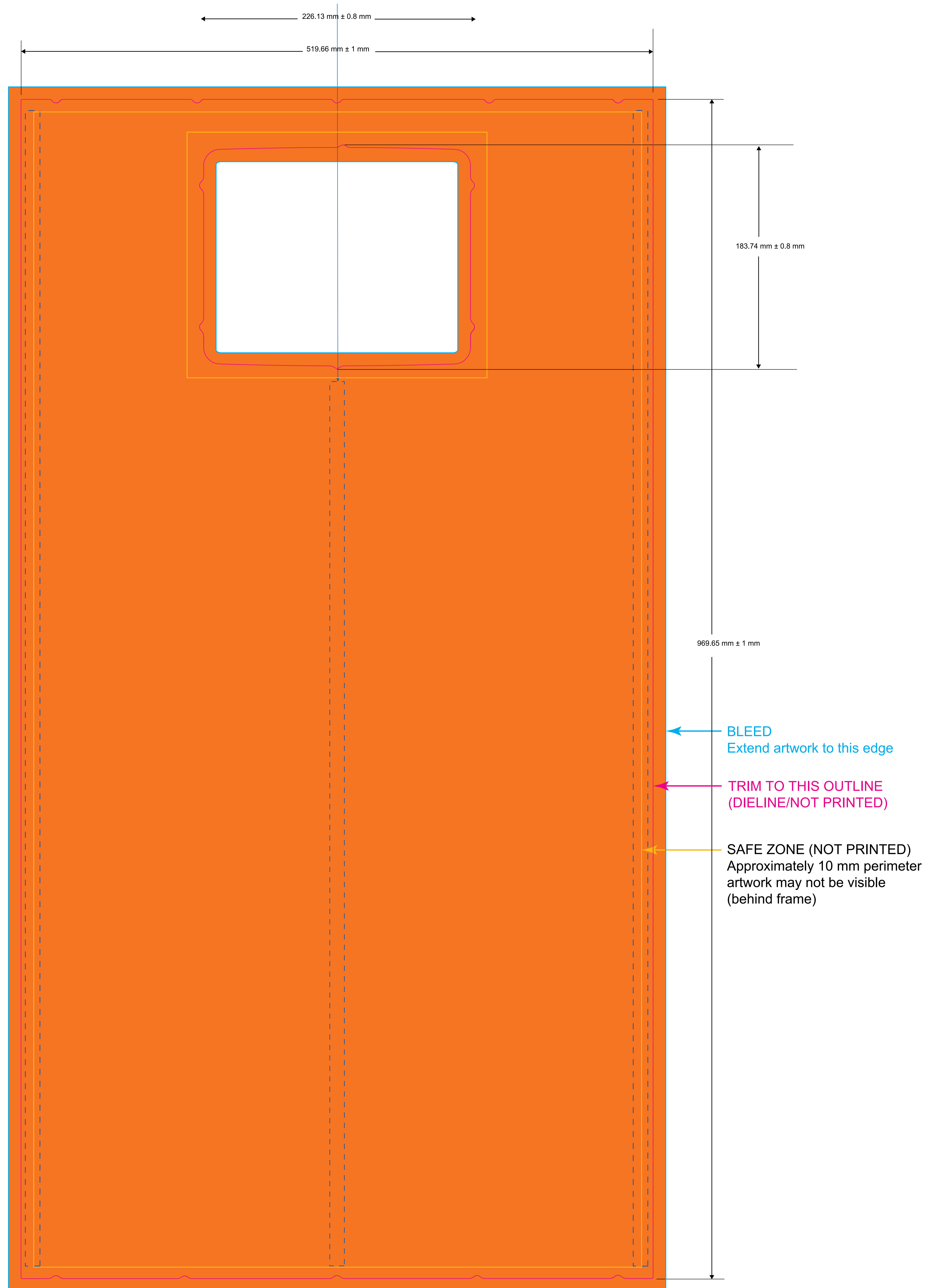
EXPRESS PLUS POWER LINK

**NOTES & REQUIREMENTS**

- Artwork must be in **vector** format. Do not use raster images.
- Artwork must be in **CMYK** process color. (Call out any PMS numbers for reference, but artwork is screen printed using CMKY only.)
- For full bleed artwork, provide minimum 5-mm bleed.
- Convert all fonts to outlines.
- \* ChargePoint artwork is included as reference ("ChargePoint Reference Artwork" layer).

ChargePoint standard artwork is included for reference only.

Place custom artwork on CUSTOMER ARTWORK layer:



SCALE 1.000

# EXPRESS PLUS POWER LINK 1000 WITH DISPLAY EXPRESS PLUS POWER LINK 2000 WITH DISPLAY CUSTOM SIGN TEMPLATE -FRONT CMK

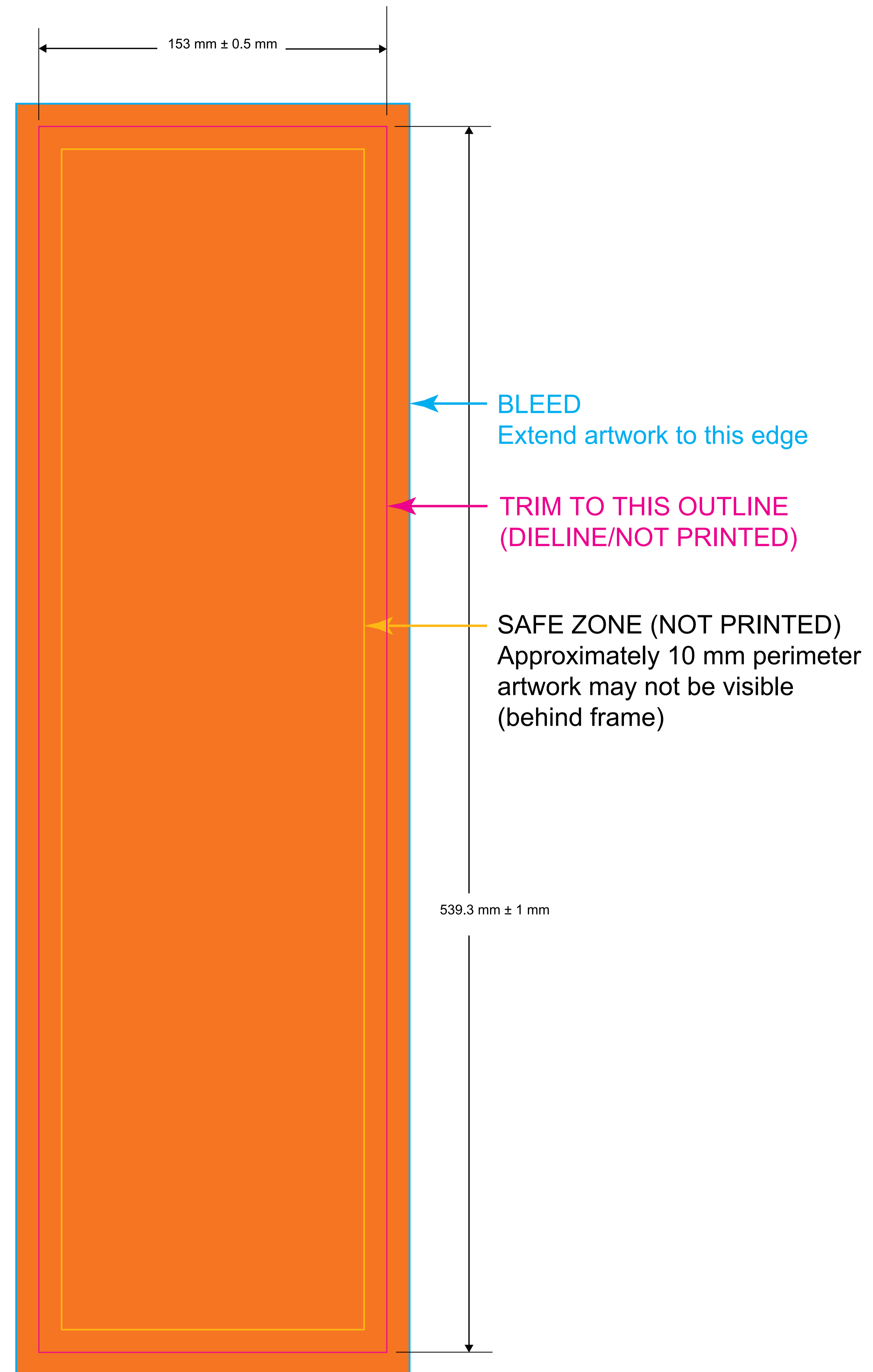
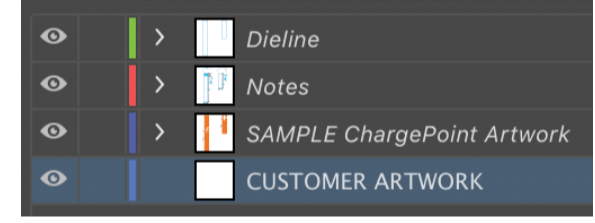


## NOTES & REQUIREMENTS

- Artwork must be in **vector** format. Do not use raster images.
- Artwork must be in **CMYK** process color. (Call out any PMS numbers for reference, but artwork is screen printed using CMKY only.)
- For full bleed artwork, provide minimum 5-mm bleed.
- Convert all fonts to outlines.
- \* ChargePoint artwork is included as reference ("ChargePoint Reference Artwork" layer).

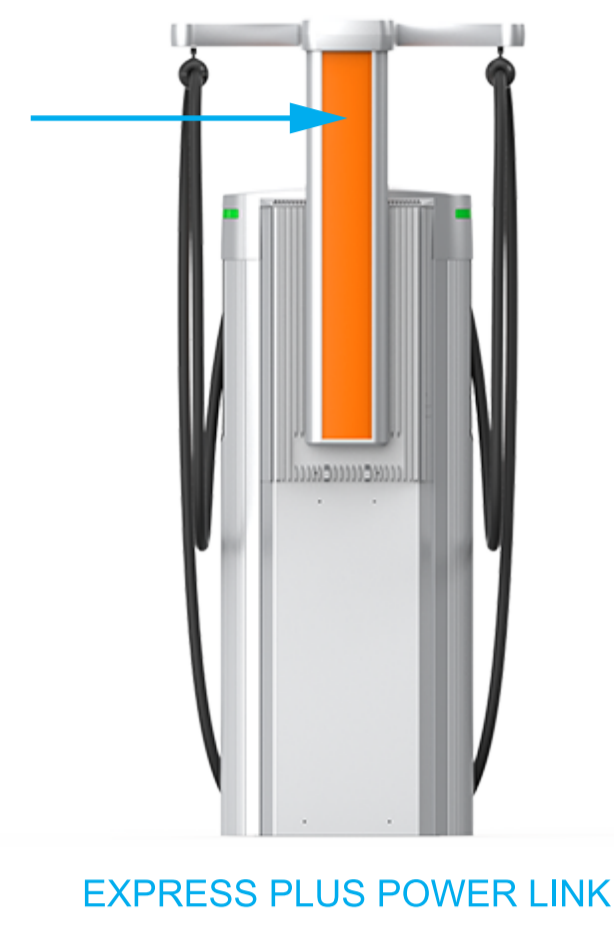
ChargePoint standard artwork is included for reference only.

Place custom artwork on CUSTOMER ARTWORK layer:



SCALE 1.000

**EXPRESS PLUS POWER LINK 1000 WITH DISPLAY**  
**EXPRESS PLUS POWER LINK 2000 WITH DISPLAY**  
**CUSTOM SIGN TEMPLATE**  
**-FRONT CMK**

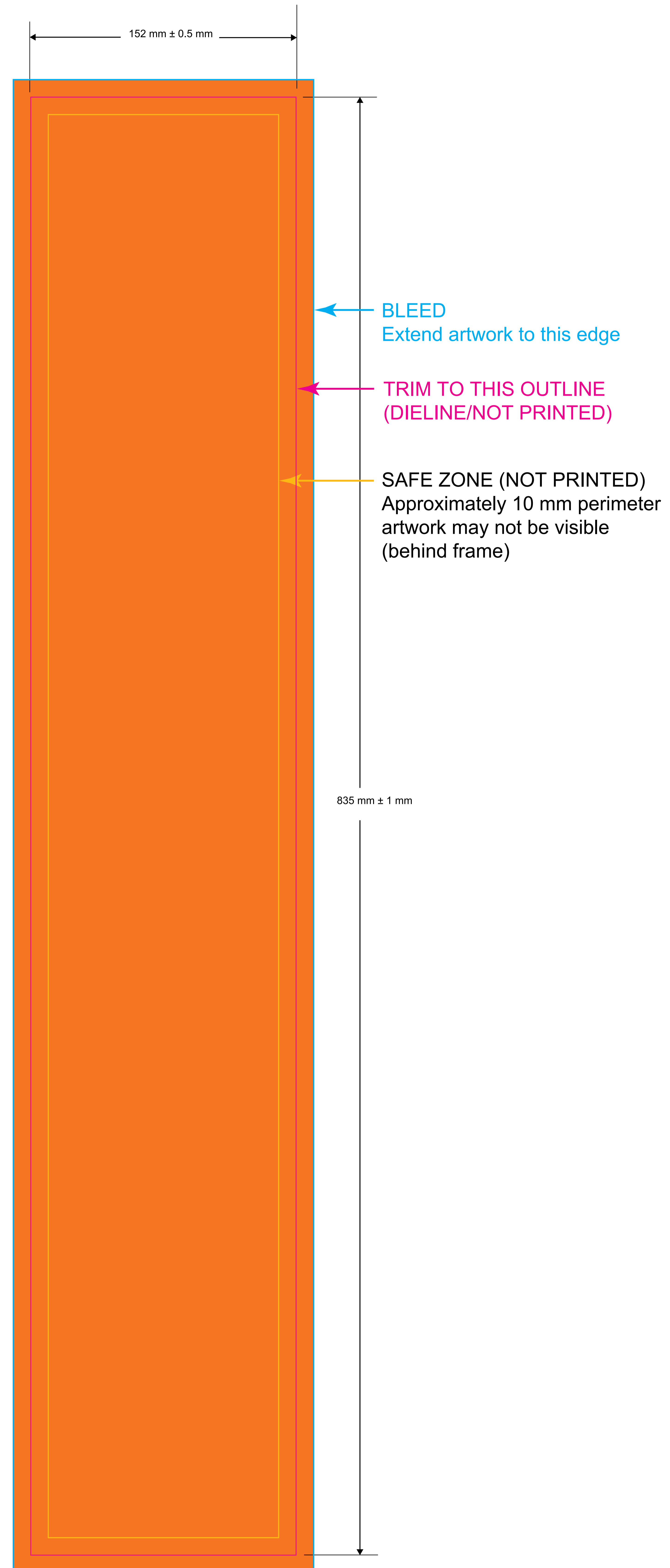
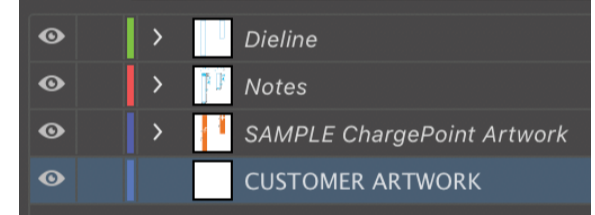


**NOTES & REQUIREMENTS**

- Artwork must be in **vector** format. Do not use raster images.
- Artwork must be in **CMYK** process color. (Call out any PMS numbers for reference, but artwork is screen printed using CMKY only.)
- For full bleed artwork, provide minimum 5-mm bleed.
- Convert all fonts to outlines.
- \* ChargePoint artwork is included as reference ("ChargePoint Reference Artwork" layer).

ChargePoint standard artwork is included for reference only.

Place custom artwork on CUSTOMER ARTWORK layer:



SCALE 1.000